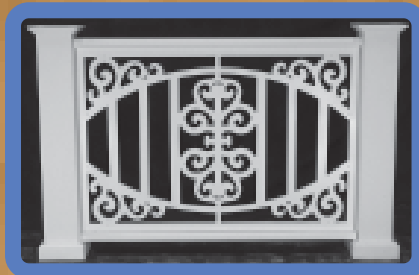


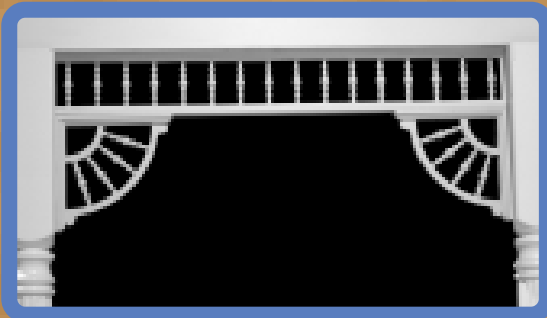
**Custom Rails**



Permalife Inc. specialty rail systems are a unique and innovative product that gives you the opportunity to make your own statement with the railing system on your porch or deck. Shown here are just a few examples of what we can create for you.



**Turned Spindle Brackets and Spandrels**



**Spandrel sections**  
(brackets and posts sold separately)  
6-3/4" high by 2" depth

- SPA6X4 4' length
- SPA6X5 4' length
- SPA6X6 4' length
- SPA6X7 4' length
- SPA6X8• 4' length
- SPA6X9 9' length
- SPA6X10 10' length



**Brackets**  
VBS12X12  
12" x 12" x 2"

**Columns**



**12" column set in use**



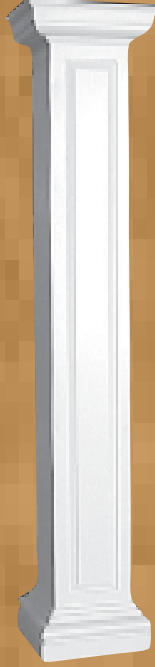
Exclusively From Permalife Inc.  
Base, Capital, and trim ring made to fit 6", 8", 10", 12", 16", and 24" PVC schedule 40 pipe . These sets, when applied to PVC pipe, can be used as a round, non-tapered interior or exterior column.

These sets give the user the advantage of lower cost in many cases, as well as being able to attain greater heights than most traditional types of columns.

Permalife will supply suggested methods for finishing PVC pipe. However, we will not provide any warranty pertaining to the ability of any finish to adhere properly to the surface of any PVC pipe. PVC pipe is not load bearing and can not be split.



**Square Column Plain**



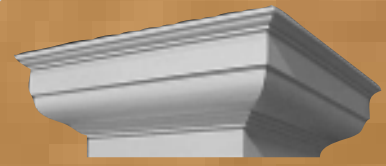
**Square Column Single Panel**



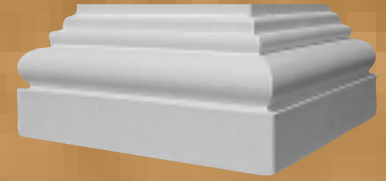
**Square Column Fluted**



**Square Column Double Panel**



**Deluxe Tuscan style Capital and Base for square columns**



**Tuscan Sizes**  
 10" cap: 16-1/4" x 5"  
 10" base: 14-1/4" x 7"  
 12" cap: 18-1/4" x 5"  
 12" base: 16-1/4" x 7"



**Square cut**



**Rounded cut**

Panels can be cut with rounded "router cut" corners, or squared "assembled" corners. If not specified when ordered, they will be rounded. An upcharge will apply for squared corners.



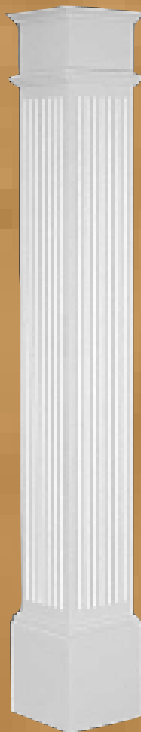
**Closeup of pilaster style cap**

Pilaster Cap: 2-1/4" over shaft size



**Closeup of pilaster style base**

Pilaster Base size: 1-1/2" over shaft size



**Square Column with pilaster style cap & base**

**Another Permalife first!**  
 Maintenance free square columns with fluting or raised panels. These square columns can be manufactured as monolithic units or they can be split so as to be installed around existing steel or wood support columns. Permalife square columns are not designed to be load bearing, but we can install internal support members on a special order basis. Please specify when ordering.

Our standard sizes are 9-1/4" or 11-1/4" square for the Deluxe Tuscan cap & base. (Shipped Loose)

Pilaster style cap & base can be used on 5-1/4", 7-1/4", 9-1/4", and 11-1/4". (Attached unless split)

We can also make any custom width that you might need.

All square columns are made on a custom basis. They can range in height from very short to over twenty feet.

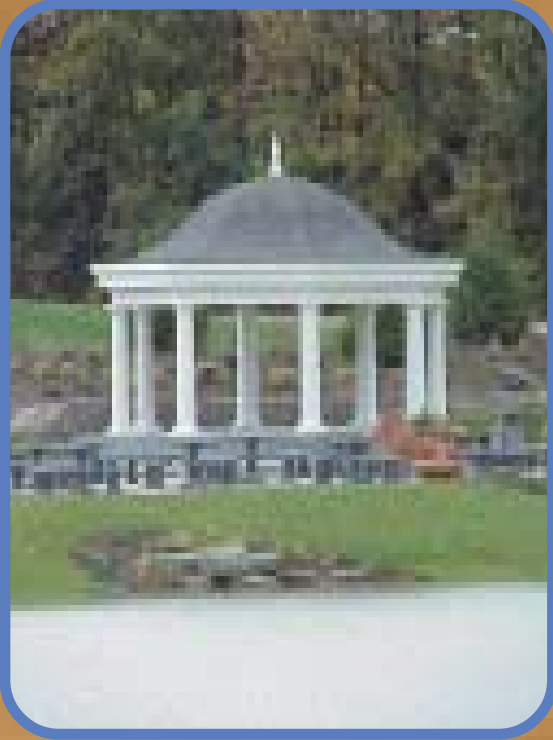


**Customized square columns**



# Columns

Permalife columns are round, tapered, fiberglass reinforced columns and are available in the sizes and according to the specifications as listed on this page, with the exception of the 20" columns which are made of high density urethane (call Permalife Inc. for details).



**Fluted columns support this canopy**



**Large and Very Large columns (Round or Square) are a specialty at Permalife Inc.**



**Split columns with a mirror between can make a wall look like a hallway to another room.**

## Round Tapered Fiberglass Column

- Made of fiberglass reinforced polymer (shaft, tuscan cap, & base)
- Finish – None provided. For field finishing, start by roughing up surface with 100 grit sanding sponge. Apply high quality latex or oil primer and finish with the appropriate latex or oil exterior paint.
- Load bearing
- Can be ordered “SPLIT” to wrap existing posts. (Requires re-assembly and finishing on the jobsite. There is additional cost for this option. Once columns are split, they are no longer load bearing.
- Tuscan cap & base are standard (shipped loose and priced separately) with a variety of decorative caps available.
- Sizes 8" x 8' to 12" x 12' are stock in smooth & fluted. Larger sizes up to 36" x 24' available (special order).
- Columns can be trimmed for height by cutting from the bottom using a masonry blade in a circular saw.

Many of these sizes can also be ordered as Straight Shaft (non tapered) Call Permalife Inc. for information.



Round Column with Single Panel square pedestal base.

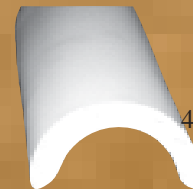


Product Number	Diameter by Height	Smooth or Fluted	Column Load Strength** (lbs. Max.)
FP88	8" X 8'	Smooth	10,000
FP88F	8" X 8'	Fluted	10,000
FP810	8" X 10'	Smooth	10,000
FP810F	8" X 10'	Fluted	10,000
FP108	10" X 8'	Smooth	14,000
FP108F	10" X 8'	Fluted	14,000
FP1010	10" X 10'	Smooth	14,000
FP1010F	10" X 10'	Fluted	14,000
FP128	12" X 8'	Smooth	18,000
FP128F	12" X 8'	Fluted	18,000
FP1210	12" X 10'	Smooth	18,000
FP1210F	12" X 10'	Fluted	18,000
FP1212	12" X 12'	Smooth	18,000
FP1212F	12" X 12'	Fluted	18,000
FP1214	12" X 14'	Smooth	18,000
FP1216	12" X 16'	Smooth	18,000
FP148	14" X 8'	Smooth	20,000
FP1410	14" X 10'	Smooth	20,000
FP1412	14" X 12'	Smooth	20,000
FP1414	14" X 14'	Smooth	20,000
FP1416	14" X 16'	Smooth	20,000
FP168	16" X 8'	Smooth	20,000
FP1610	16" X 10'	Smooth	20,000
FP1612	16" X 12'	Smooth	20,000
FP1614	16" X 14'	Smooth	20,000
FP1616	16" X 16'	Smooth	20,000
FP1618	16" X 18'	Smooth	20,000
FP188	18" X 8'	Smooth	20,000
FP1810	18" X 10'	Smooth	20,000
FP1812	18" X 12'	Smooth	20,000
FP1814	18" X 14'	Smooth	20,000
FP1816	18" X 16'	Smooth	20,000
FP1818	18" X 18'	Smooth	20,000
FP18x20	18" X 20'	Smooth	20,000
FP20x12	20" X 12'	Smooth	20,000
FP20x14	20" X 14'	Smooth	20,000
FP20x16	20" X 16'	Smooth	20,000
FP20x18	20" X 18'	Smooth	20,000
FP20x20	20" X 20'	Smooth	20,000
FP20x22	20" X 22'	Smooth	20,000
FP20x24	20" X 24'	Smooth	20,000

## Half Columns And Capitals



**BASE 1**  
7" height  
9-1/4" width



**HCOL 6**  
12' length  
6" width  
4-1/4" projection



**CAP 2**  
7-1/2" height  
10-1/2" width  
6" projection



**CAP 1**  
11-3/4" height  
11-3/4" width  
7-1/2" projection

\* NOTE: These are half columns and capitals. They are meant to be used as a decorative element applied against a wall and not for structural purposes. They cannot be joined together to wrap around a post or to form a round column.

# Column Capitals



Tuscan Capital & Base



Roman Ionic



Scamozzi



Temple of Winds



Corinthian



Custom Raised Octagon column base

	Product Number	Overall Height	Square Dim. (Abacus)	Column Diameter
<b>TUSCAN</b>				
8" Capital	TC2508	2-3/8"	9-3/4"	8"
8" Base	TB2608	4-1/4"	10-1/2"	8"
10" Capital	TC2510	3-1/8"	12-1/4"	10"
10" Base	TB2610	5-3/4"	13"	10"
12" Capital	TC2512	3-1/2"	14-1/4"	12"
12" Base	TB2614	6-1/2"	15-1/2"	12"
14" Capital	TC2514	3-7/8"	16-1/8"	14"
14" Base	TB2614	8"	18-3/8"	14"
16" Capital	TC2516	4-3/8"	19-1/4"	16"
16" Base	TB2616	8-1/2"	21-1/4"	16"
18" Capital	TC2518	4-7/8"	21-1/2"	18"
18" Base	TB2618	9-1/2"	24"	18"
20" Capital	P20CAP	5-5/8"	16-7/8"	20"
20" Base	P20BAS	11"	20-1/16"	20"
<b>ROMAN IONIC</b>				
8" Capital	RI3108	3-1/8"	8"	8"
10" Capital	RI3110	4"	10-15/16"	10"
12" Capital	RI3112	4-3/4"	12-9/16"	12"
14" Capital	RI3114	5-3/4"	17"	14"
<b>SCAMOZZI</b>				
8" Capital	SC3208	3"	9-7/8"	8"
10" Capital	SC3210	3-3/4"	13-3/4"	10"
12" Capital	SC3212	4-3/4"	15-3/4"	12"
14" Capital	SC3214	5-1/2"	18-3/4"	14"
<b>TEMPLE OF THE WINDS</b>				
8" Capital	TW3308	7-1/2"	10"	8"
10" Capital	TW3310	10"	13-1/2"	10"
12" Capital	TW3312	11-3/4"	16-1/2"	12"
14" Capital	TW3314	14"	21-1/4"	14"
<b>CORINTHIAN</b>				
8" Capital	RC3408	8-1/2"	11-3/4"	8"
10" Capital	RC3410	12"	14-5/8"	10"
12" Capital	RC3412	14-1/2"	18-1/2"	12"
14" Capital	RC3414	17-1/4"	22-1/2"	14"



# Tapered Columns



### Square tapered column

Standard size 60" tall  
12" width at bottom,  
taper down to 8"  
Any custom size  
available



### Square tapered panel column

Standard size 60" tall  
18-1/2" width at  
bottom, taper down to  
14-3/4" at top  
Any custom size  
available



### Square tapered column KIT

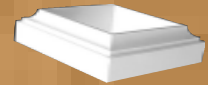
Standard size 72" tall can  
be cut down to 60". 19"  
width at bottom, taper  
down to 12"  
We supply 4 mitre cut  
panels and center  
square inserts. You  
assemble on job and  
save money.



### Square tapered column with panel sides



**PPT6X6**  
**base**  
Cap & base  
trim for 6x6  
porch post.



**PP6x6x108**  
5-1/4"x5-1/4"  
x108"  
**Porch Post**  
(Non load  
bearing)



Custom square columns with  
raised panel pedestal base  
Photo courtesy of Brian Pennings

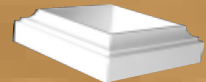


### Recessed panel square tapered column KIT

Standard size 72" tall can be cut down to 60", 19"  
width at bottom, and taper down to 12".  
We supply 4 mitre cut panels and center  
square inserts.  
You assemble on job and save money.



**PPT6X6**  
**base**  
Cap & base  
trim for 6x6  
porch post.



**PP6x6x108**  
5-1/4"x5-1/4"  
x108"  
**Porch Post**  
(Non load  
bearing)

Phone 1-800-376-6768 or 1-616-245-0180  
Fax 1-800-386-6768 or 1-616-245-5142  
www.permalifeinc.com

