



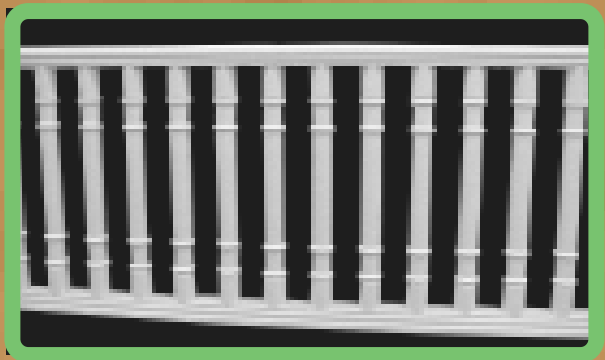
Custom mounting blocks for railing installation. Upper photo is a custom mount on a round column



NP4
Newel Post
 Width 3-1/2"
 Height 48"
 4 sided post



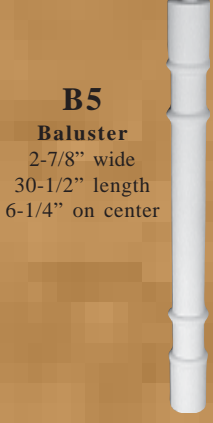
B8 balusters with BR2 bottom and TR2 top rails



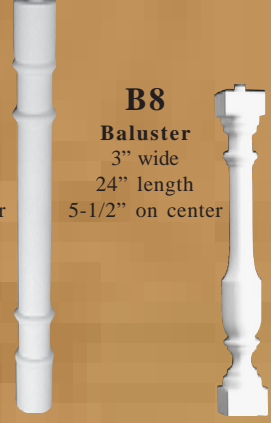
B5 baluster rail section-BR2 bottom and TR2 top rails



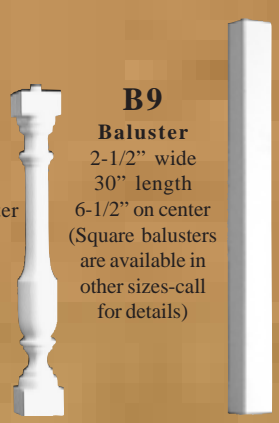
B4
Baluster
 2-1/2" wide
 29-1/2" length
 5-1/2" on center



B5
Baluster
 2-7/8" wide
 30-1/2" length
 6-1/4" on center



B8
Baluster
 3" wide
 24" length
 5-1/2" on center

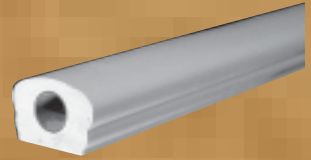


B9
Baluster
 2-1/2" wide
 30" length
 6-1/2" on center
 (Square balusters are available in other sizes-call for details)

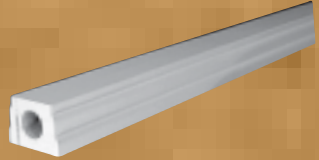


Shown are B4 baluster, TR2 Top rail, BR2 Bottom rail and NP4 3-1/2" colonial newel post

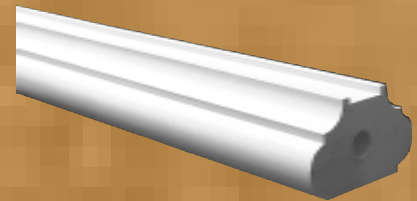
TR2
Top Rail
 3-5/8" wide
 2-5/8" high
 10' length



BR2
Bottom Rail
 3-1/2" wide
 2-1/2" high
 10' length



SPIN3
Square Spindle
 1-1/4" square
 32" length
 5-1/4" on center



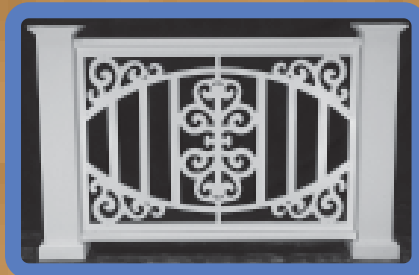
BR5
Bottom Rail
 4-1/2" wide
 2-1/2" high
 10' length



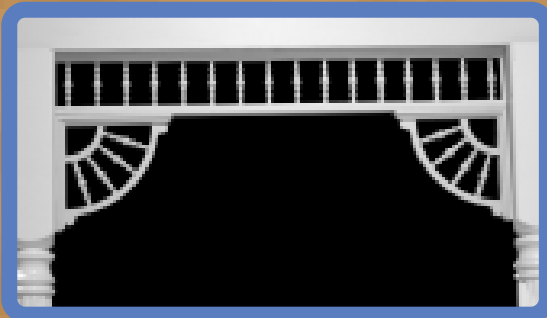
Custom Rails



Permalife Inc. specialty rail systems are a unique and innovative product that gives you the opportunity to make your own statement with the railing system on your porch or deck. Shown here are just a few examples of what we can create for you.



Turned Spindle Brackets and Spandrels



Spandrel sections
(brackets and posts sold separately)
6-3/4" high by 2" depth

- SPA6X4 4' length
- SPA6X5 4' length
- SPA6X6 4' length
- SPA6X7 4' length
- SPA6X8• 4' length
- SPA6X9 9' length
- SPA6X10 10' length



Brackets
VBS12X12
12" x 12" x 2"

Columns



12" column set in use



Exclusively From Permalife Inc.
Base, Capital, and trim ring made to fit 6", 8", 10", 12", 16", and 24" PVC schedule 40 pipe . These sets, when applied to PVC pipe, can be used as a round, non-tapered interior or exterior column.

These sets give the user the advantage of lower cost in many cases, as well as being able to attain greater heights than most traditional types of columns.

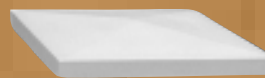
Permalife will supply suggested methods for finishing PVC pipe. However, we will not provide any warranty pertaining to the ability of any finish to adhere properly to the surface of any PVC pipe. PVC pipe is not load bearing and can not be split.

Beveled Post Caps

12-1/2"



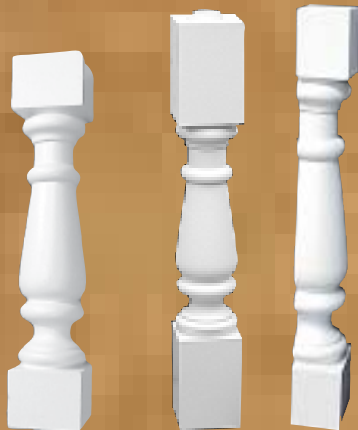
8-3/8" & 9"



NP8RP
Newel Post
 Width 8"
 Height 47"
 4 sided post

B1 Baluster flat back

Same as B1 except flat on back 1/3. These are used where back side is not visible (such as upper porch railings that are not accessible) Same look from front - about half the price.



B1 Baluster

4-1/2" square
 22-3/4" long
 6-5/8 on center

B1 Baluster Extended

Same as B1 but extended for use on stairways
 4-1/2" square
 30" long
 6-5/8" on center

B2 Baluster

5-1/4" square
 22" long
 7-3/8" on center

B6 Baluster

4-1/2" square
 22-3/4" long
 8-1/2" on center

B3 Baluster

5-3/8" square
 27-5/8" long
 6-1/2" on center

B10-FB Baluster

Width 9"
 Height 24"
 Depth 4-1/2"

NP12RP Newel Post

Width 11-3/4"
 Height 47"
 4 sided post

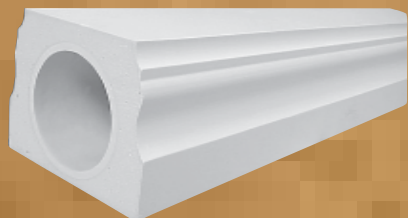
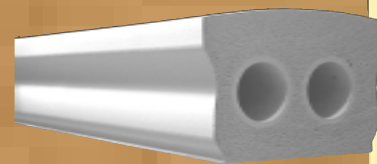


TR1 Top Rail

7-1/2" wide
 5-1/2" high
 8' or 10' lengths

TR4 Top Rail

6" wide
 4" high
 Up to 16' lengths



BR1 Bottom Rail

7-1/2" wide
 5-1/2" high
 8' or 10' lengths

BR4 Bottom Rail

6" wide
 4" high
 Up to 16' lengths



Shown are B1 baluster, TR1 Top rail-curved, BR1 Bottom rail-curved.



Shown are B1 baluster, TR1 Top rail, BR1 Bottom

