



Custom mounting blocks for railing installation. Upper photo is a custom mount on a round column



**NP4**  
**Newel Post**  
 Width 3-1/2"  
 Height 48"  
 4 sided post

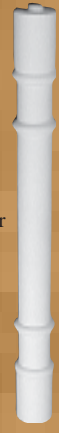


B8 balusters with BR2 bottom and TR2 top rails

**B4**  
**Baluster**  
 2-1/2" wide  
 29-1/2" length  
 5-1/2" on center



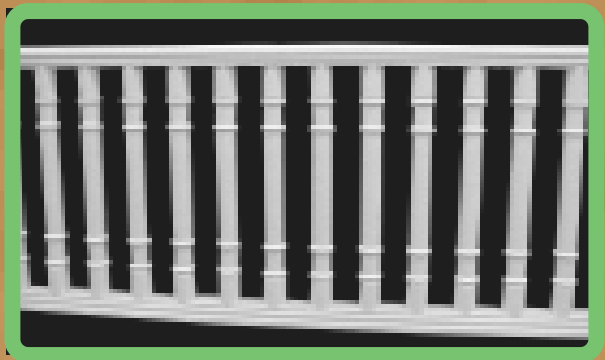
**B5**  
**Baluster**  
 2-7/8" wide  
 30-1/2" length  
 6-1/4" on center



**B8**  
**Baluster**  
 3" wide  
 24" length  
 5-1/2" on center

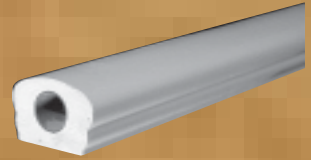


**B9**  
**Baluster**  
 2-1/2" wide  
 30" length  
 6-1/2" on center  
 (Square balusters are available in other sizes-call for details)

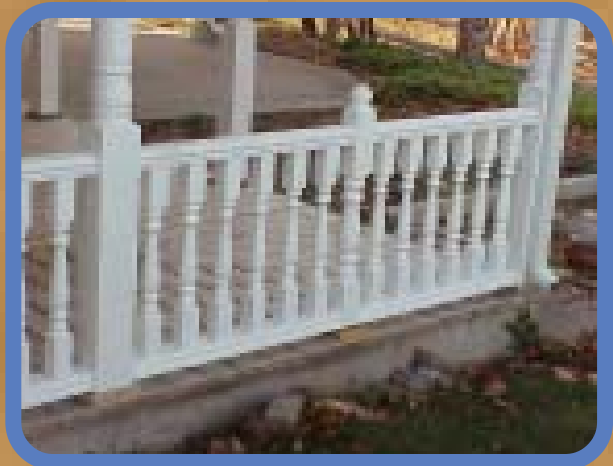
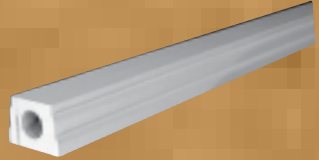


B5 baluster rail section-BR2 bottom and TR2 top rails

**TR2**  
**Top Rail**  
 3-5/8" wide  
 2-5/8" high  
 10' length



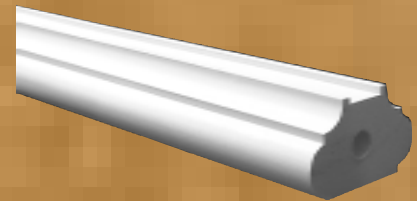
**BR2**  
**Bottom Rail**  
 3-1/2" wide  
 2-1/2" high  
 10' length



Shown are B4 baluster, TR2 Top rail, BR2 Bottom rail and NP4 3-1/2" colonial newel post



**SPIN3**  
**Square Spindle**  
 1-1/4" square  
 32" length  
 5-1/4" on center



**BR5**  
**Bottom Rail**  
 4-1/2" wide  
 2-1/2" high  
 10' length

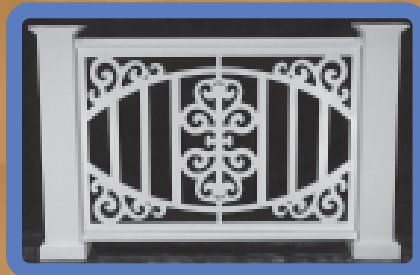


# Specialty Rails & Columns

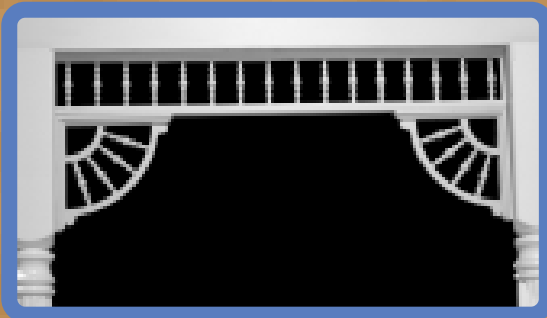
## Custom Rails



Permalife Inc. specialty rail systems are a unique and innovative product that gives you the opportunity to make your own statement with the railing system on your porch or deck. Shown here are just a few examples of what we can create for you.



## Turned Spindle Brackets and Spandrels



**Spandrel sections**  
(brackets and posts sold separately)  
6-3/4" high by 2" depth

- SPA6X4 4' length
- SPA6X5 4' length
- SPA6X6 4' length
- SPA6X7 4' length
- SPA6X8• 4' length
- SPA6X9 9' length
- SPA6X10 10' length



**Brackets**  
VBS12X12  
12" x 12" x 2"

## Columns



12" column set in use



Exclusively From Permalife Inc.  
Base, Capital, and trim ring made to fit 6", 8", 10", 12", 16", and 24" PVC schedule 40 pipe. These sets, when applied to PVC pipe, can be used as a round, non-tapered interior or exterior column.

These sets give the user the advantage of lower cost in many cases, as well as being able to attain greater heights than most traditional types of columns.

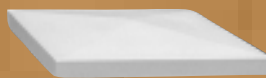
Permalife will supply suggested methods for finishing PVC pipe. However, we will not provide any warranty pertaining to the ability of any finish to adhere properly to the surface of any PVC pipe. PVC pipe is not load bearing and can not be split.

**Beveled Post Caps**

12-1/2"



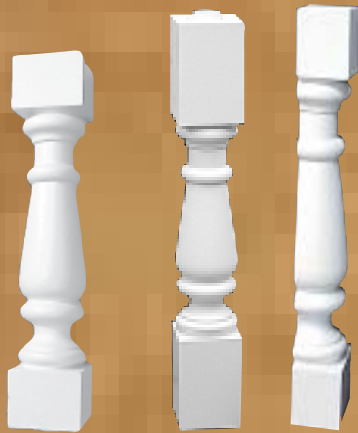
8-3/8" & 9"



**NP8RP**  
**Newel Post**  
 Width 8"  
 Height 47"  
 4 sided post

**B1 Baluster flat back**

Same as B1 except flat on back 1/3. These are used where back side is not visible (such as upper porch railings that are not accessible) Same look from front - about half the price.



**B1 Baluster**

4-1/2" square  
 22-3/4" long  
 6-5/8 on center

**B1 Baluster Extended**

Same as B1 but extended for use on stairways  
 4-1/2" square  
 30" long  
 6-5/8" on center

**B2 Baluster**

5-1/4" square  
 22" long  
 7-3/8" on center

**B6 Baluster**

4-1/2" square  
 22-3/4" long  
 8-1/2" on center

**B3 Baluster**

5-3/8" square  
 27-5/8" long  
 6-1/2" on center

**B10-FB Baluster**

Width 9"  
 Height 24"  
 Depth 4-1/2"

**NP12RP Newel Post**

Width 11-3/4"  
 Height 47"  
 4 sided post

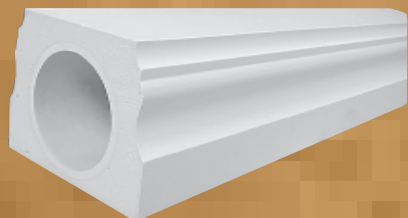
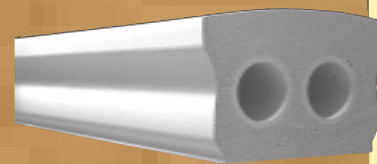


**TR1 Top Rail**

7-1/2" wide  
 5-1/2" high  
 8' or 10' lengths

**TR4 Top Rail**

6" wide  
 4" high  
 Up to 16' lengths



**BR1 Bottom Rail**

7-1/2" wide  
 5-1/2" high  
 8' or 10' lengths

**BR4 Bottom Rail**

6" wide  
 4" high  
 Up to 16' lengths



Shown are B1 baluster, TR1 Top rail-curved, BR1 Bottom rail-curved.



Shown are B1 baluster, TR1 Top rail, BR1 Bottom

